

Technical Manual



JBL EON615

SPECIFICATIONS

ACOUSTIC & ELECTRICAL SPECIFICATIONS:

- Frequency Response (± 3 dB): 50 Hz - 20 kHz
- Frequency Range (-10 dB): 39 Hz - 20 kHz
- Maximum SPL Output: 127 dB
- Input Impedance: Ohms (balanced), Ohms (unbalanced)
- Power Rating: 1000W Peak (700W LF + 300W HF), 500W Continuous (350W LF + 150W HF)

SYSTEM COMPONENTS:

- Cabinet: Enclosure (Not For Sale)
- Grille:
- Low Frequency Driver: 615H 15 inch (380mm) woofer
- D.C.Resistance: 5.56 ohm +/- 10%

SYSTEM COMPONENTS: (CONT'D)

- High Frequency Driver: 2414H-1 37.5 mm (1.5") annular polymer diaphragm, neodymium compression driver
- D.C.Resistance: 3.60 ohm $\pm 0.2\%$

AURAL SWEEP TEST SPECIFICATIONS:

- A. System.Aural Sweep Test: 0.065V input, 50 Hz to 10 kHz
- B. L.F.Aural Sweep Test: 7.0V Input, 10 Hz to 300 Hz
- C. H.F.Aural Sweep Test: 0.75V Input, 500 Hz to 1.5 kHz

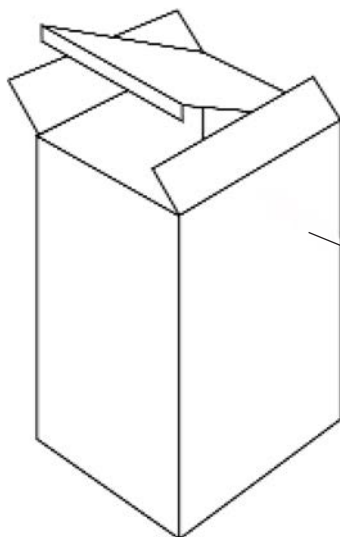
PHYSICAL SPECIFICATIONS:

- Enclosure Dimensions: 707 x 439 x 365mm (H x W x D) (27.8 x 16.8 x 14.5i n.)
- Net Weight: 17.69 kg (39 lbs)

WARRANTY INFORMATION:

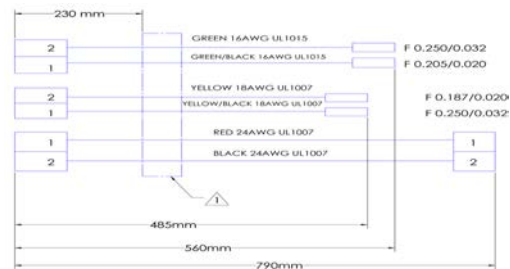
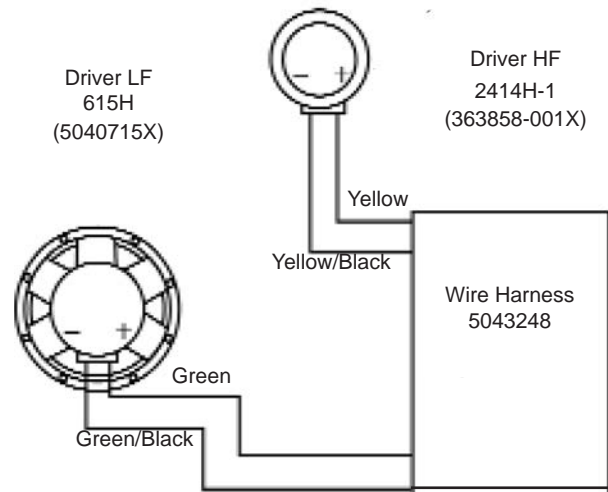
- Refer to Warranty Statement packed with each product.

PACKAGE



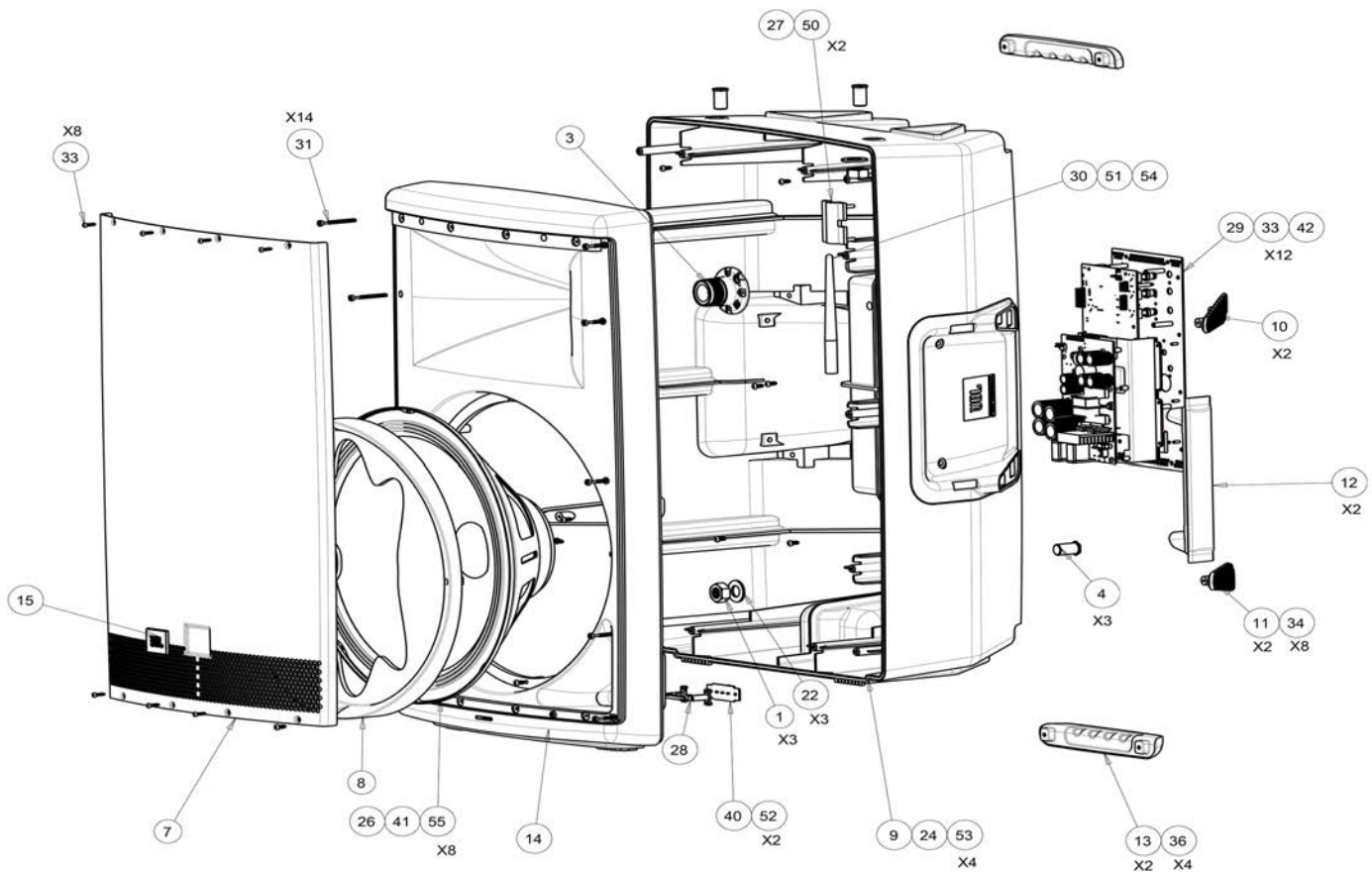
- Quick Setup Guide 5043250
- Beauty Carton 5043256
- Filler 5043260 (2)
- Shipping Carton 5043258
- Cord, AC, Line 425-00000-00 (120V) 425-00000-01 (220V)

WIRING DIAGRAM



JBL EON615

COMPONENT EXPLODED VIEW



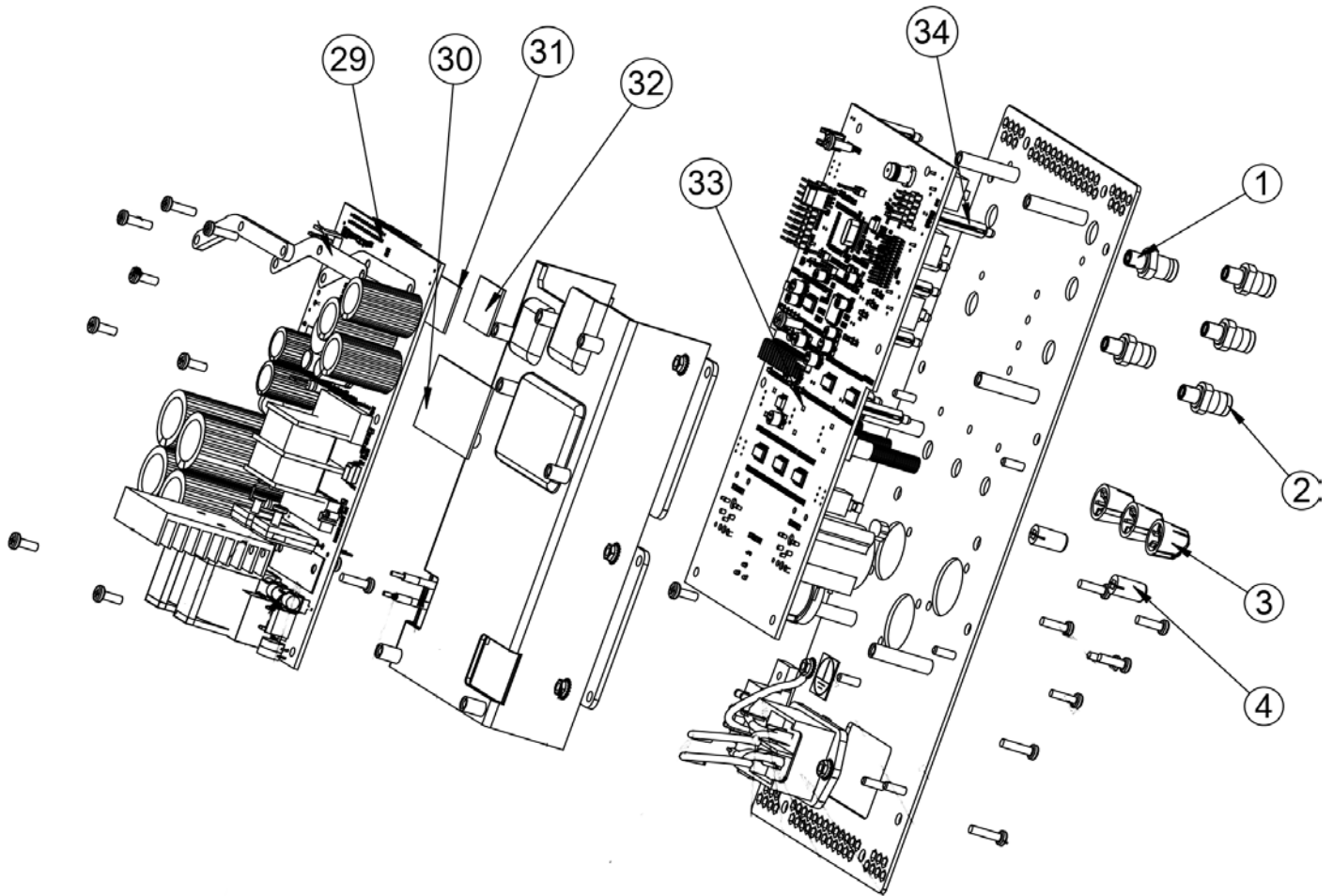
COMPONENT PARTS LIST:

Item	Part No.	Qty	Description
1	838-00900-00	3	NUT, M14 FINE, CLR ZINC RH
3	363858-001X	1	M/I, 2414H-1
4	364616-001	3	FLY BOLT
7	5039755	1	GRILLE, EON G4
8	5039904	1	WOOFER COVER PLATE
9	5048432	1	EON615, REAR ENCLOSURE
10	5039907	2	FOOT, LEFT
11	5039908	2	FOOT, RIGHT
12	5039909	2	SIDE HANDLE ASSEMBLY
13	5039910	2	HANDLE, TOP/BOTTOM
14	5039926	1	BAFFLE, EON615
15	5040033	1	LOGO BADGE, EON615
22	848-00100-02	3	WASHER, M14,REG, CLR ZINC
24	364835-001	11.3"	GASKET, ENCLOSURE EON515
26	5040715X	1	615H, 15" WOOFER
27	5041398	1	EON615 ANTENNA HOLDER
28	5043063	1	EON615, FRONT LED LENS
29	5043263	1	AMPLIFIER ASSY, EON615
30	5044450	1	COAXIAL CABLE ASSY,600MM,EON600 SERIES
31	5049473	14	SCR,PT,M4x40mm Baffle

Item	Part No.	Qty	Description
33	5043266	20	SCREW, AMPLIFIER & GRILLE, EON600
34	883-41110-12	8	SCR, 8x3/4, Pan, PH, BLK Zinc, LCS
36	5043269	4	Screw, Top/Bottom Handle
40	5044213	1	EON615,LIGHT PCB ASSEMBLY
41	360-70002-01	1	GASKET, REAR 15"
42	5043248	1	Wire Harness w/Ferrite, EON615
50	5044889	2	EON600, LED-ANTENNA GASKET
51	5044449	1	ANTENNA MODULE,EON600 SERIES
52	881-21400-20	2	SCR,PT,K35X32MM,PANHD, PH DRIVE, BLK
53	5045827	4	TINNERMAN CLIP
54	365462-001	1	CUP PLUG
55	5043267	12	SCR, 4x1/2, RND, PH, WD, CLR Zinc, LCS (side hdl)
56	5046357	1	LINER, EON600
57	5048960	1	Ferrite Bead LED Cable
58	5048962	1	FERRITE BEAD ANTENNA, EON615

JBL EON615

COMPONENT EXPLODED VIEW



COMPONENT PARTS LIST:

Item	Part No.	Qty	Description
1	5054669	1	G4-Button ABS
2	5054670	4	G4-Button ABS
3	5054671	3	G4-Knob ABS
4	5054672	2	G4-Button Silicon Natural grey
8	xxxxxx?	1	G4 rear plate SECC T=1.5mm CED Coating
10	5054673	1	IEC AC JACK inlet+switch 10A 250V
29	5054674	1	JBL G4 AMP PCBA ASS'Y
30	5054675	1	SILICON INSULATOR L53xW28xT1.0mm xGREY,adhesive DS11
31	5054676	1	SILICON INSULATOR L23xW18xT1.0mm xGREY,adhesive DS11
32	5054677	1	SILICON INSULATOR L20xW10xT1.0mm
33	5054678	1	JBL G4 DSP PCBA ASS'Y
34	5054679	10	LED Spacer Nylon LE52222-5